

# LIFTING CYLINDERS

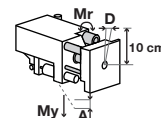
## INSTALLATION SIZE HZ40

### ▶ PRODUCT SPECIFICATIONS



#### ▶ Forces and moments

Max allowable static forces and moments.



### ▶ INCLUDED IN DELIVERY



2 [piece]  
Mounting block  
**KB8-28**



2 [piece]  
Industrial shock absorbers PowerStop  
**PHE14X15NSDE-A**



2 [piece]  
Stop sleeve  
**DST01491**

### ▶ RECOMMENDED ACCESSORIES



#### ENERGY SUPPLY



**DRV1-8X6**  
Flow Control Valves - with Swivel joint



**DSV1-8**  
Pressure safety valve



**DSV1-8E**  
Pressure safety valve with quick exhaust



#### SENSORS



**NJ8-E2**  
Inductive proximity switch - Cable 5 m



**NJ8-E2S**  
Inductive proximity switch - Connector M8



#### CONNECTIONS / OTHER



**KAG500**  
Plug-in connector Straight Cable 5m - Socket M8 (female)



**KAW500**  
Plug-in connector Angled Cable 5m - Socket M8 (female)

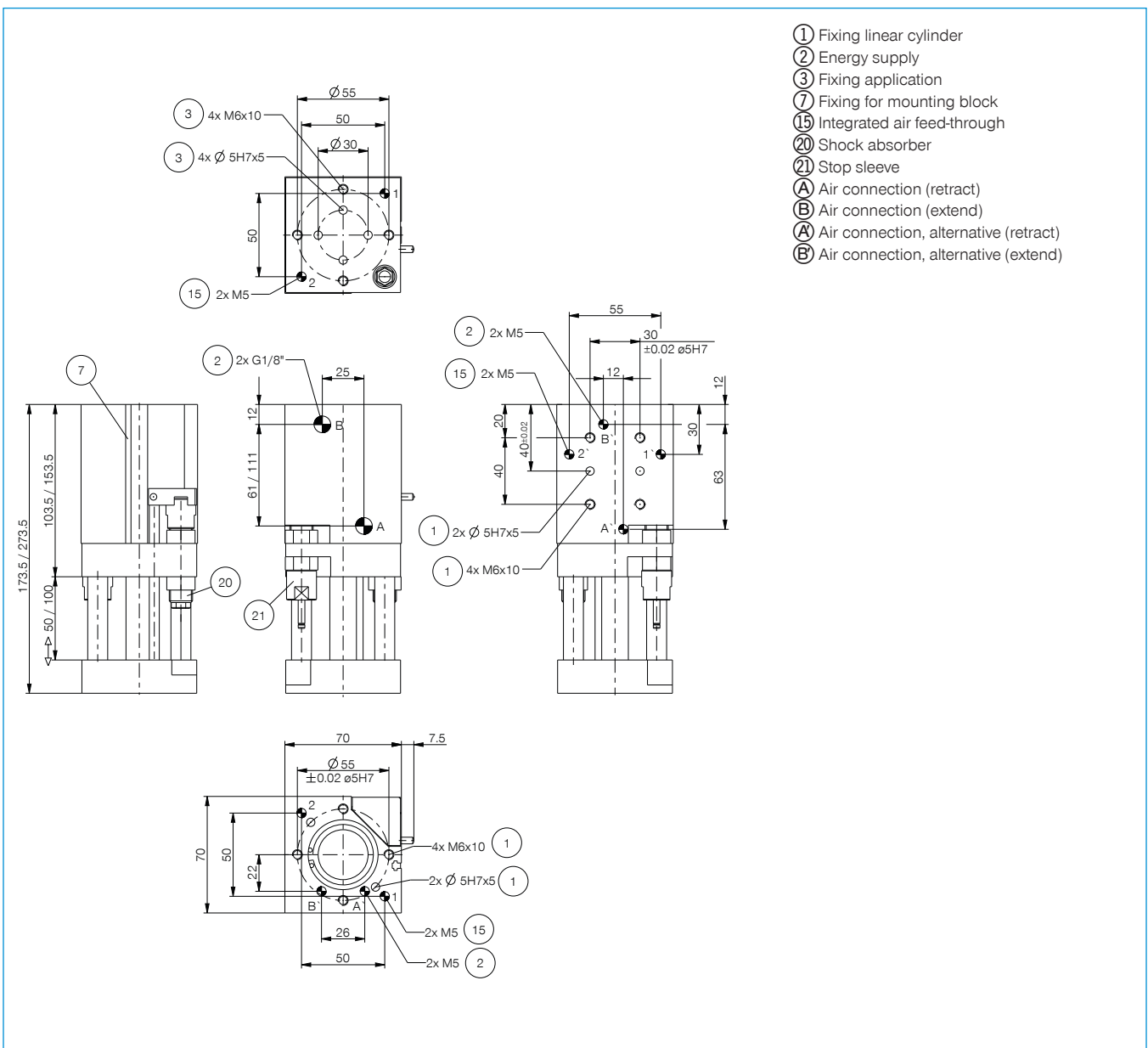


**S8-G-3**  
Plug-in connector customizable Straight - Connector M8



**S12-G-3**  
Plug-in connector customizable Straight - Connector M12

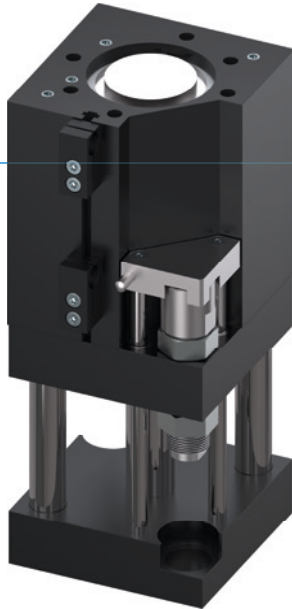
| Order no.                        | ▶ Technical data |            |
|----------------------------------|------------------|------------|
|                                  | HZ40-50D2        | HZ40-100D2 |
| Stroke [mm]                      | 50               | 100        |
| Pressure force max. [N]          | 720              | 720        |
| Retraction force [N]             | 600              | 600        |
| Air feed-through [Quantity]      | 2                | 2          |
| Nominal operating pressure [bar] | 6                | 6          |
| Operating temperature min. [°C]  | 5                | 5          |
| Operating temperature max. [°C]  | +80              | +80        |
| Air volume per cycle [cm³]       | 116              | 232        |
| Weight [kg]                      | 2                | 2.4        |
| Deviation D for Mr 5 N [mm]      |                  | 0.5        |
| Deviation D for Mr 10 N [mm]     | 0.1              |            |
| Deviation D for Mr 15 N [mm]     |                  | 0.15       |
| Deviation D for Mr 70 N [mm]     | 0.5              |            |
| Deflection A for My 60 N [mm]    | 0.05             | 0.1        |
| Deflection A for My 100 N [mm]   | 0.1              | 0.15       |



# LIFTING CYLINDERS

## SERIES HZ

### ▶ PRODUCT ADVANTAGES



#### ▶ Hoseless air passage

Eliminates undefined interference contours and wear-prone hoses and increases the safety of your application in the process

#### ▶ Dampened end position

By using PowerStop shock absorbers, you can gently move up to the end positions, increasing the process reliability and durability of your application

#### ▶ Very robust

Two ground and hard chrome-plated guide rods guarantee a secure process sequence with their rigidity and long service life

### ▶ SERIES CHARACTERISTICS

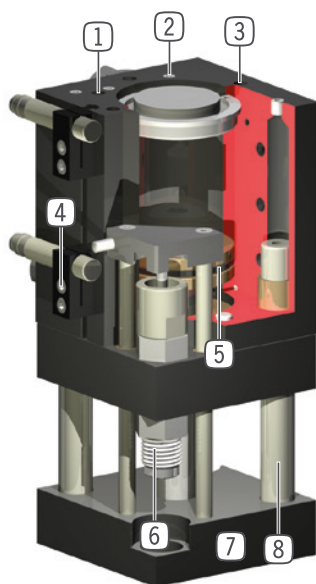
#### Installation size

HZXX-XXXD2

|  |   |
|--|---|
|  <b>10 million maintenance-free cycles (max.)</b> | ● |
|  <b>Inductive sensor</b>                          | ● |
|  <b>Powerstop end position damping</b>            | ● |
|  <b>IP40</b>                                      | ● |



## ► BENEFITS IN DETAIL



- ① **Integrated air feed-through**
  - for hoseless air transfer
- ② **Energy supply**
  - possible from several sides
- ③ **Mounting and positioning**
  - mounting possible from several sides for versatile positioning
- ④ **Mounting block**
  - mounting for inductive proximity switch
- ⑤ **Drive**
  - double-acting pneumatic cylinder
- ⑥ **Patented, hydraulic shock absorber**
  - adjustable end position damping
- ⑦ **Intake flange**
  - for fixing to the customer specific application
- ⑧ **Two guide rods**
  - high forces and moments capacity

## ► TECHNICAL DATA

|                                  | Stroke<br>[mm] | Pressure force max.<br>[N] | Retraction force<br>[N] | Weight<br>[kg] | IP class |
|----------------------------------|----------------|----------------------------|-------------------------|----------------|----------|
| Installation size<br><b>HZ40</b> | 50 - 100       | 720                        | 600                     | 0,1 - 0,15     | IP40     |

## ► FURTHER INFORMATION IS AVAILABLE ONLINE



All information just a click away at: [www.zimmer-group.com](http://www.zimmer-group.com). Find data, illustrations, 3D models and operating instructions for your installation size using the order number for your desired product. Quick, clear and always up-to-date.